



# How to use the 3d Box Configurator



Springpack Ltd

Woodside Point, Williamson Road,  
Worcester, WR5 1SG

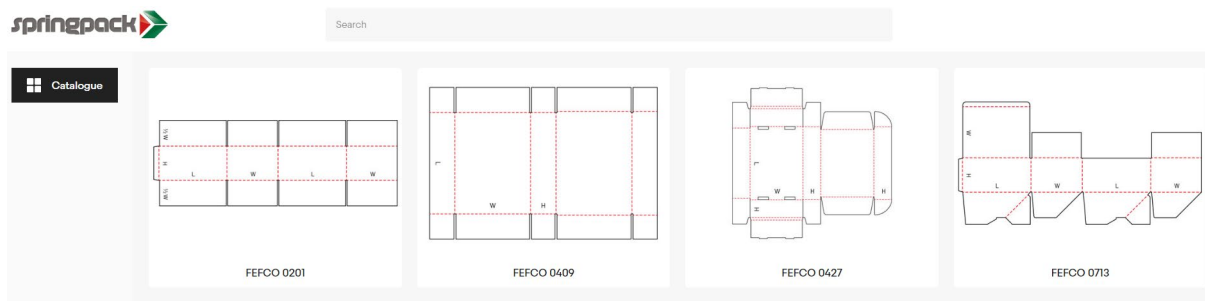
## Contents

Start .....	1
Change the Size of the Box .....	2
Change the Colour and Fluting.....	2
Adding Artwork to the Box.....	3
Adding Artwork to the Inside of the Box .....	4
See the Box Open.....	4
See the Box Flat .....	5
Submitting the project over to us .....	7
Further Help and Guidance .....	7

## Start

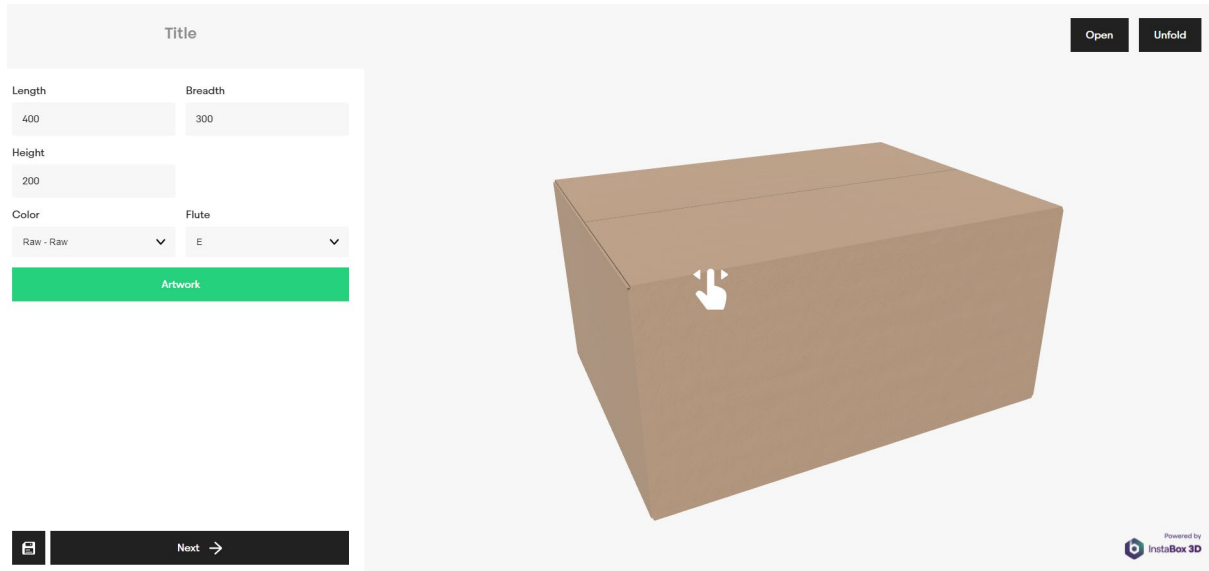
Once you have clicked the Start Designing button you will see the configurator open and a selection of FEFCO boxes.

Simply click on one of the box layouts to start configuring.



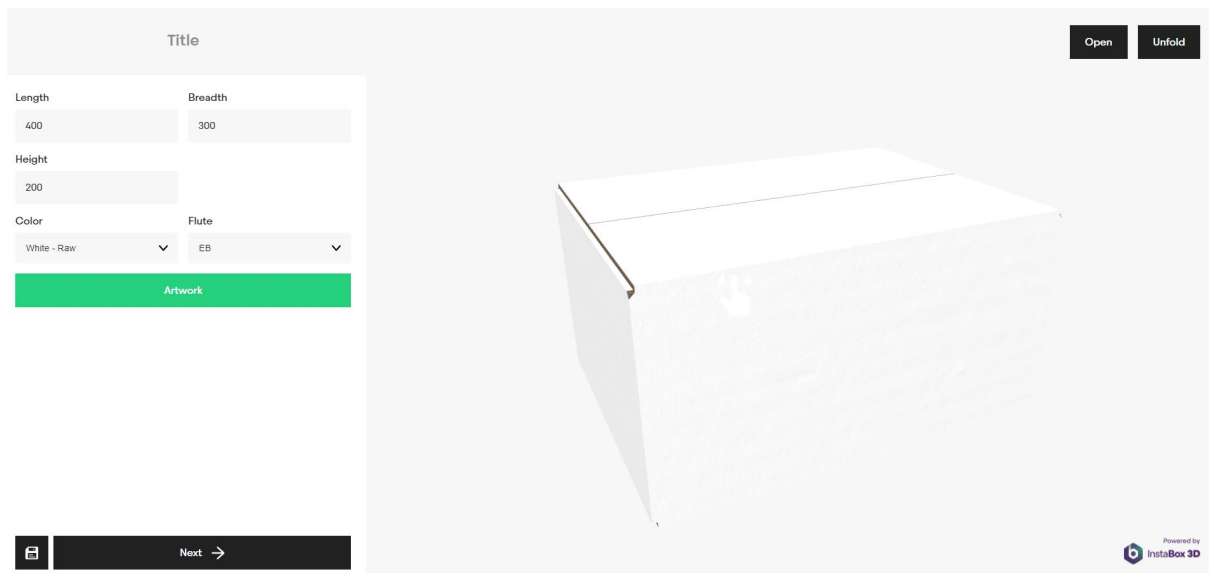
## Change the Size of the Box

Now you will see the box as a 3d model. From here you can change the Length, Breadth and Height of the box. Click inside any of the grey boxes and enter in a new value. You will see the box change dimensions in the 3d model.




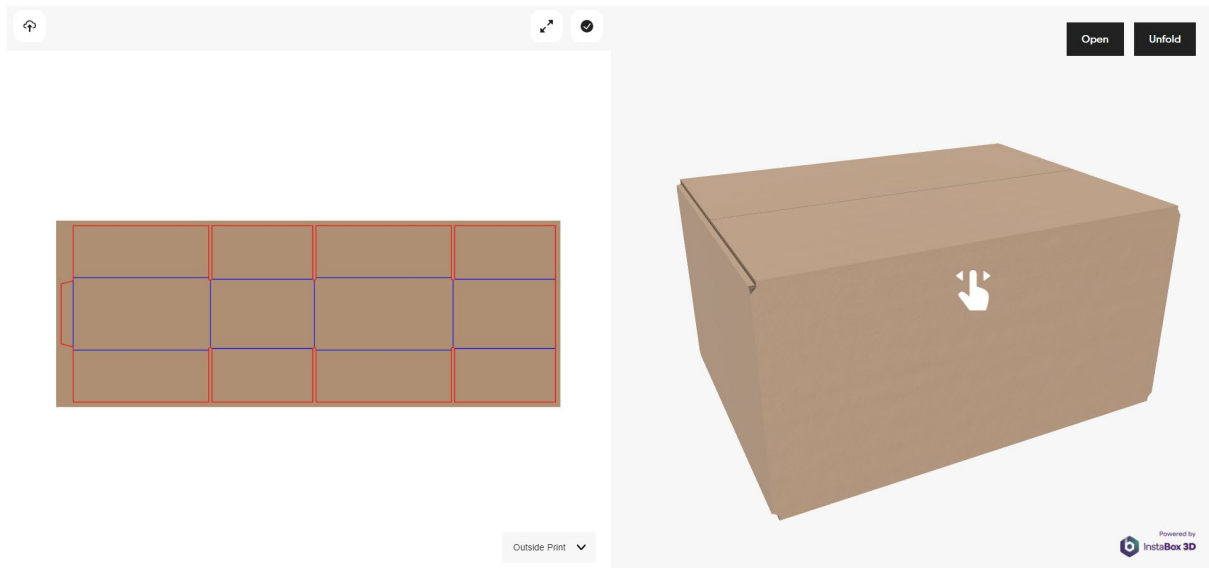
## Change the Colour and Fluting

You can select from Raw, White or Raw White and from numerous fluting grades. Again you will see the 3d model change as you make the changes.



## Adding Artwork to the Box

To add your own branding to the box, first click the icon on the top right corner (  )



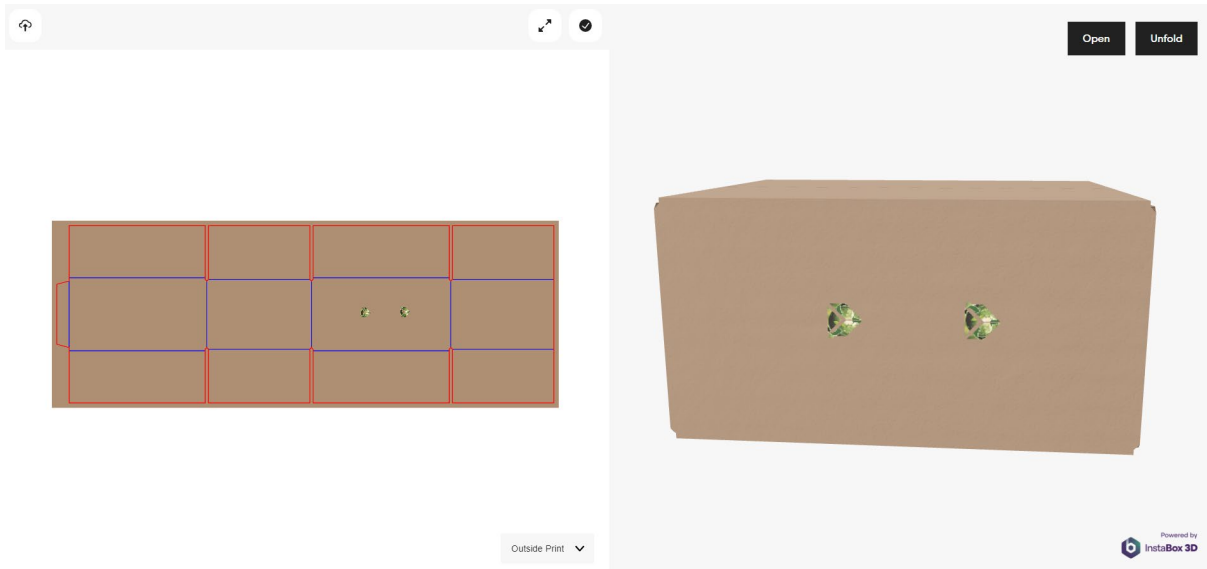
Then you will be asked to select what image you would like to use.

### Upload Images



**Confirm**

Now that you have selected your images or images to the box you will see them on the 3d model.



With the image selected you will see that a toolbar will appear at the top of the screen.

Here you can move the image up or down, duplicate it or remove it. The arrows allows you to expand the screen to give more visibility.



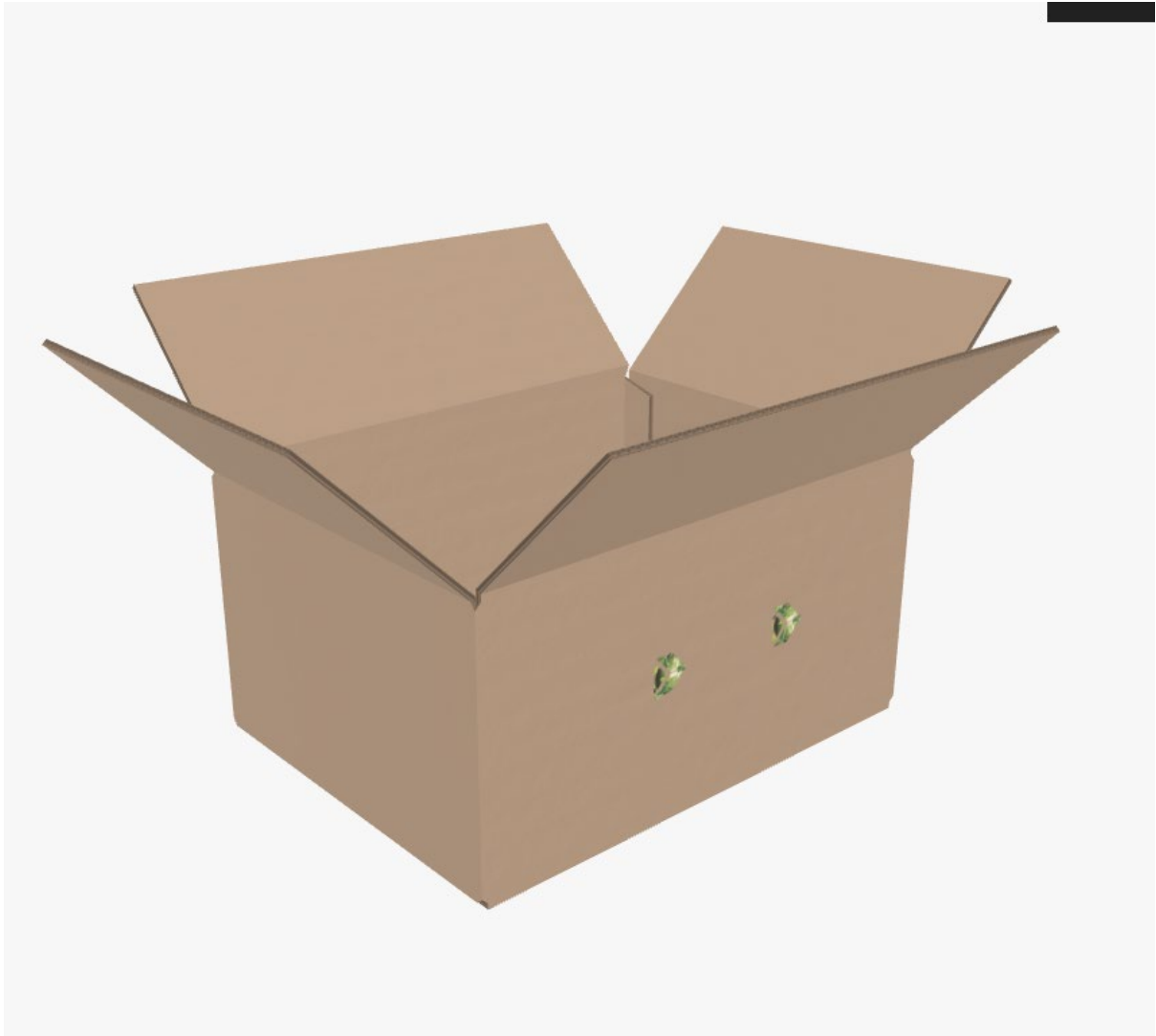
## Adding Artwork to the Inside of the Box

There is a button which allows you to select from outside print to inside print. The process is the same, however the images will appear on the inside of the box.



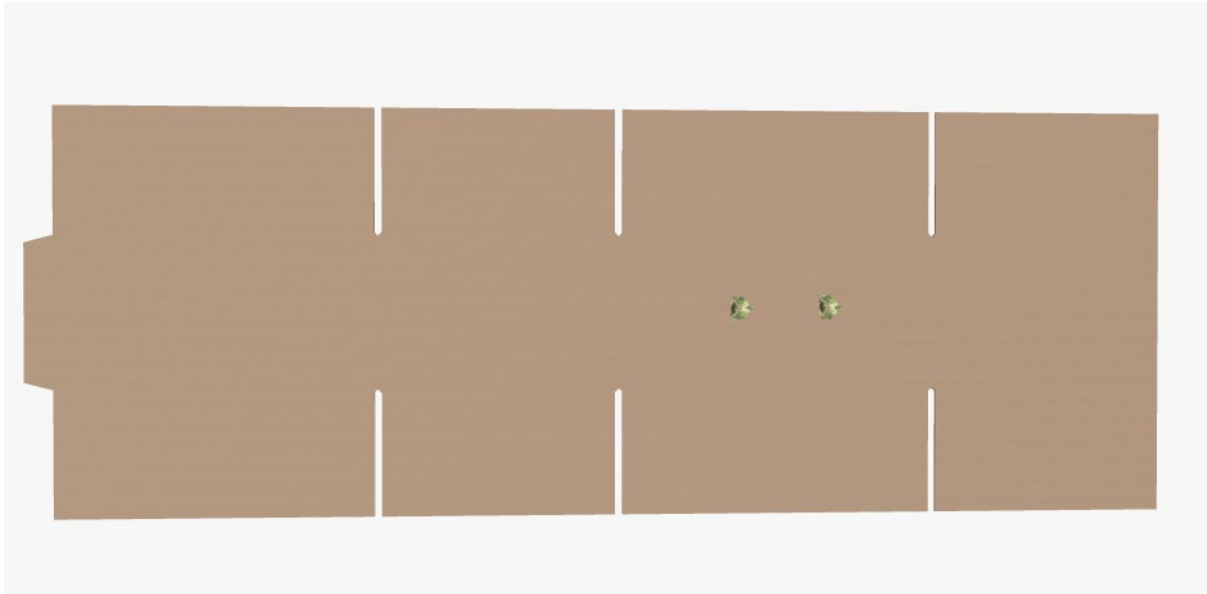
## See the Box Open


If you select the open button, the model of the box will open.



## See the Box Flat

If you select the unfold button the entire box unfold so you can see it flat.



Once you are happy with the design simply click the Tick on the top toolbar (  )

Now you will be returned the start screen, where you need to give the box a title.

**Title**

**Length**  **Breadth**

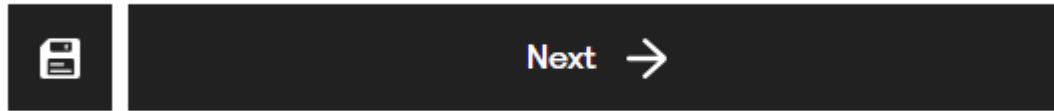
**Height**

**Color**  **Flute**

**Artwork**

## Submitting the project over to us

You can click the save icon to save the project as a PDF, to move the project over to one of team to quote, click the Next button.



We will need to know some simple contact information and then click submit and your done.

**Summary** ✕

FEFCO 0201

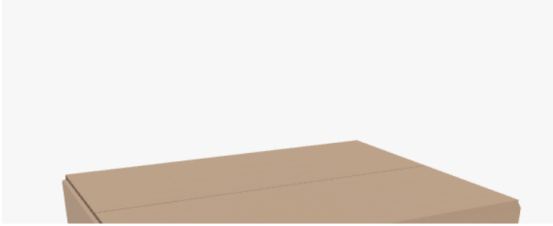
Data

Color: Raw - Raw	Flute: EB
Length: 400	Breadth: 300
Height: 200	

Fill out the form to finish the configuration

Name: *	Company Name: *
<input type="text"/>	<input type="text"/>
Contact Phone Number: *	Contact Email Address: *
<input type="text"/>	<input type="text"/>

\* Required fields



**Submit**

## Further Help and Guidance

If you require further help and guidance please do not hesitate to contact:

[marketing@spingpack.co.uk](mailto:marketing@spingpack.co.uk)

or give us a call on 01905 457 000